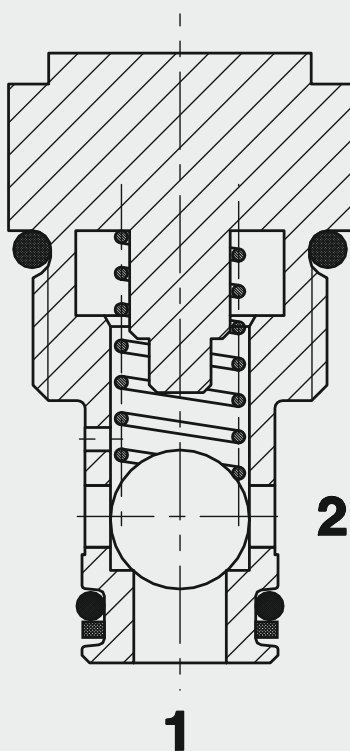


## FUNCTION



The check valve RV08A-01 is a direct-acting, spring-loaded ball poppet valve. When there is no flow through the valve, the spring holds the ball in the closed position and therefore shuts off port 2 from port 1. The valve opens when the pressure at port 1 is higher than the pressure at port 2, including the pressure created by the spring force.

## Check Valve UNF Ball Poppet Type, Direct Acting SAE-08 Cartridge – 420 bar RV08A-01

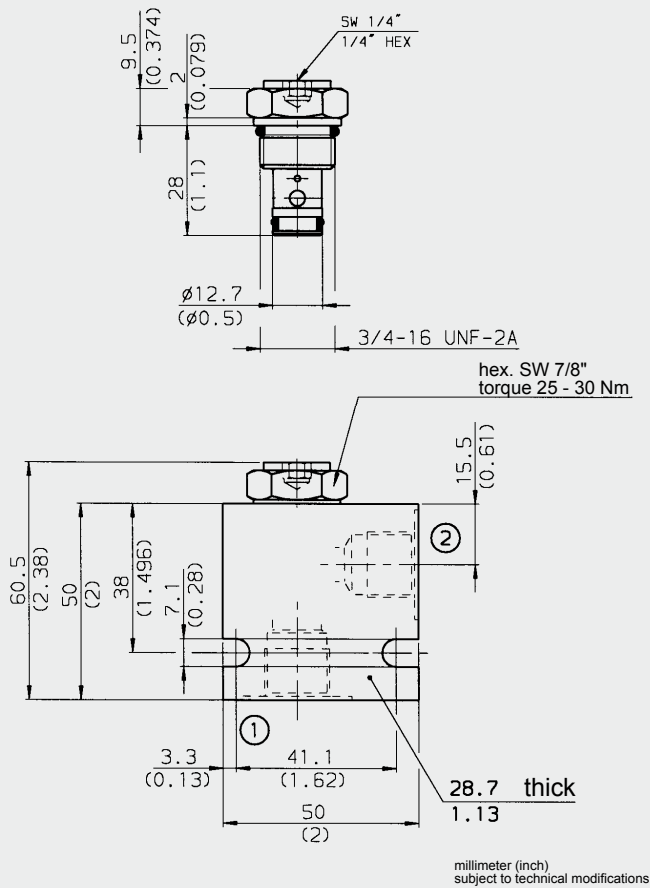
### FEATURES

- Main application is to prevent uncontrolled movement or creeping of loaded cylinders and also to shut-off sections of the system
- Excellent stability throughout the entire flow range
- External surfaces zinc-plated and corrosion-proof
- Hardened and ground internal valve components to ensure minimal wear and extended service life
- Low pressure drop due to CFD optimized flow path

### SPECIFICATIONS

Operating pressure:	max. 420 bar
Nominal flow:	max. 38 l/min
Internal leakage:	0.1 cm <sup>3</sup> /min at 420 bar
Cracking pressure:	0.35 bar 1.00 bar 2.00 bar 5.00 bar
Ambient temperature range:	min. -30 °C to max. +100 °C
Media operating temperature range:	min. -30 °C to max. +100 °C
Operating fluid:	Hydraulic oil to DIN 51524 Part 1 and 2
Viscosity range:	min. 7.4 mm <sup>2</sup> /s to max. 420 mm <sup>2</sup> /s
Filtration:	Class 21/19/16 according to ISO 4406 or cleaner
MTTF <sub>d</sub> :	150 years (see "Conditions and instructions for valves" in brochure 5.300)
Installation:	No orientation restrictions
Materials:	Valve body: steel Ball: roller bearing steel Seals: NBR (standard) FKM (optional, media temperature range -20 °C to +120 °C) Back-up rings: PTFE
Cavity:	FC08-2
Weight:	0.06 kg

## DIMENSIONS



## MODEL CODE

**RV08A-01 - C - N - 05**

**Basic model** \_\_\_\_\_  
Check valve UNF

**Body and ports\*** \_\_\_\_\_  
C = cartridge only  
SB3 = G3/8 ports, steel body  
AB3 = G3/8 ports, aluminium body

**Seals** \_\_\_\_\_  
N = NBR (standard)  
V = FKM

**Cracking pressure** \_\_\_\_\_  
05 = 0.35 bar (5 PSI)  
15 = 1.00 bar (15 PSI)  
30 = 2.00 bar (30 PSI)  
70 = 5.00 bar (70 PSI)

### Standard models

Model code	Part No.
RV08A-01-C-N-05	560084
RV08A-01-C-N-15	560085
RV08A-01-C-N-30	560086
RV08A-01-C-N-70	560087

### \* Standard in-line bodies

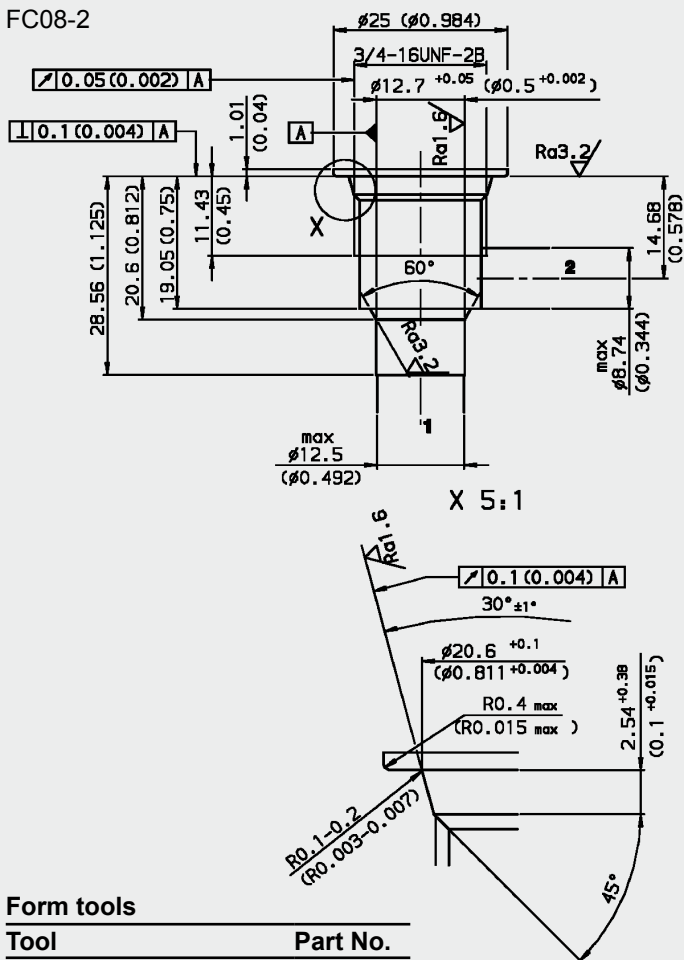
Code	Part No.	Material	Ports	Pressure
FH082-SB3	560919	Steel, zinc-plated	G3/8	420 bar
FH082-AB3	3011423	Aluminium, anodized	G3/8	210 bar

### Seal kits

Code	Material	Part No.
FH082-N Seal kit	NBR	3033920
FH082-V Seal kit	FKM	3051756

## CAVITY

FC08-2



### Form tools

Tool	Part No.
Countersink FC08-2	175473
Reamer FC08-2	175474

millimeter (inch) subject to technical modifications

## PERFORMANCE

Measured at  $v = 34 \text{ mm}^2/\text{s}$ ,  $T_{\text{oil}} = 46 \text{ }^\circ\text{C}$

