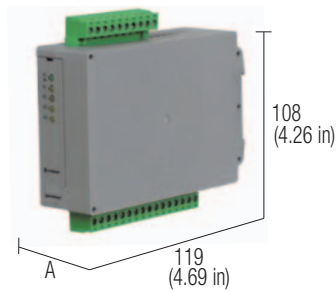
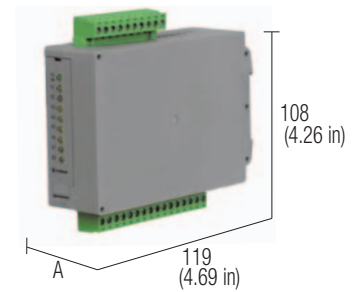


Super compact 24 Vac/dc relay modules universal control voltage

- 3 kV I/O isolation
- 1 kV isolation between output contact
- Fast connection whit pluggable terminals
- DC and AC control voltage
- Positive or negative control voltage



A = 22.5 mm (0.88 in) CR version, 35 mm (1.38 in) CRE version

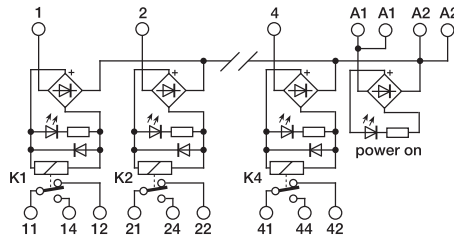


A = 22.5 mm (0.88 in) CR version, 35 mm (1.38 in) CRE version

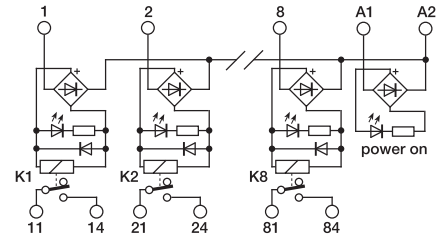
NOTES

The height dimension includes 35 mm DIN rail.
 (1) Relay model is not binding, they may be modified without prior warning. The technical data shown here is to be considered typical.
CR4-1 and **CRE4-1**: relay module with SPDT, inputs and outputs with pluggable terminals.
CR8-1 and **CRE8-1**: 8 relay module with SPST (NO), inputs and outputs with pluggable terminals.

BLOCK DIAGRAM



BLOCK DIAGRAM



VERSIONS

Pluggable relay
Fixed relay

Cat. No. XCRE41	Cat. No. XCR4
CRE4-1	CR4-1

Cat. No. XCRE81	Cat. No. XCR81
CRE8-1	CR8-1

INPUT TECHNICAL DATA

Rated voltage
 Rated current (1 channel)
 Turn ON time
 Turn OFF time
 Protection circuit

24 Vac/dc $\pm 10\%$
16 mA $\pm 10\%$
7 ms
3 ms
damping diode and bridge rectifier

24 Vac/dc $\pm 10\%$
16 mA $\pm 10\%$
7 ms
3 ms
damping diode and bridge rectifier

OUTPUT TECHNICAL DATA

Type and number of contacts
 Nominal load (resistive)
 Current breaking power
 Current of the fuse max.

SPDT AgNiO per 4 relé
8 A / 250 Vac
2000 VA
—

SPST(NO) per 8 relay
8 A / 250 Vac
2000 VA
—

GENERAL TECHNICAL DATA

Operating temperature range
 Coil/contact isolation
 Isolation between output terminals
 Protection degree
 Overvoltage category / Pollution degree
 Reference Standard
 Status display
 Connection terminal
 Housing material
 Approx. weight
 Mounting information

-10...+50°C
2.5 kVac / 60 s
1 kVac / 60 s (between open contact)
IP 20 IEC 529, EN60529
III / 2
IEC 664-1, DIN VDE 0110.1
green LED / yellow LED
2.5 mm ² fixed screw type
UL94V-0 plastic material
143 g (5.05 oz) (180 g [6.35 oz] pluggable version)
vertical on rail adjacent without gap

-10...+50°C
3 kVac / 60 s
1 kVac / 60 s (between open contact)
IP 20 IEC 529, EN60529
III / 2
IEC 664-1, DIN VDE 0110.1
green LED / yellow LED
2.5 mm ² fixed screw type
UL94V-0 plastic material
199 g (7.02 oz) (250 g [8.83 oz] pluggable version)
vertical on rail adjacent without gap

MOUNTING ACCESSORIES

Mounting rail type according to IEC60715/TH35
 Mounting rail type according to IEC60715/G32
 Replacement relay (1)
 Screw type jumper

PR/3/AC, PR/3/AC/ZB, PR/3/AS, PR/3/AS/ZB
PR/DIN/AC - PR/DIN/AS - PR/DIN/AL
Cat. No. 8904042
—
—
—

PR/3/AC, PR/3/AC/ZB, PR/3/AS, PR/3/AS/ZB
PR/DIN/AC - PR/DIN/AS - PR/DIN/AL
Cat. No. 8904042
—
—
—