

## Advanced Force Gauge

The Advanced Force Gauge (AFG) is the most versatile and fully-featured digital force gauge on the market. It can be used hand-held or fixed to a manual or motorized test stand. For added flexibility, the AFG is able to recognize data from a range of external 'Smart' force and torque sensors, so you can use it as a universal display for remote applications.

### Key Features

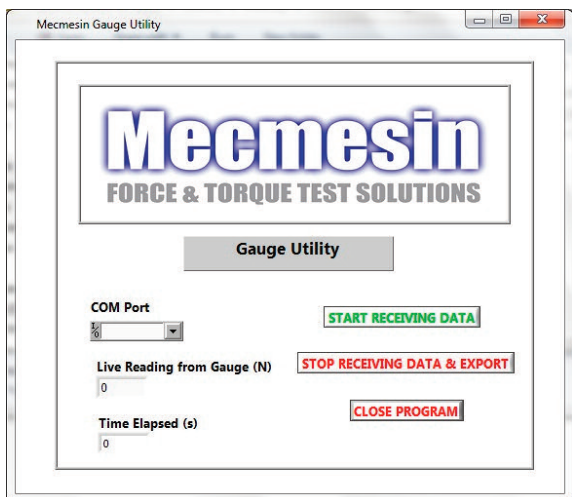
- 10 models - from 0.55 lbf to 550 lbf (2.5 N to 2500 N)
- Peak capture - Ultimate max + 1st peak
- Averaging mode - calculates average over time
- Data output - RS232, digimatic and analogue
- Pass/Fail Alarms - audible and visual
- Overload warning with trend bar
- Wide range of grips and fixtures
- Plug & Play feature



## AFG Specification Table

Model	Part No.	mN	N	kN	gf	kgf	ozf	lbf
AFG 2.5	850-412	2500 x 0.5	2.5 x 0.0005	-	250 x 0.05	-	9 x 0.002	0.55 x 0.0001
AFG 5	850-413	5000 x 1	5 x 0.001	-	500 x 0.1	0.5 x 0.0001	18 x 0.005	1.1 x 0.0002
AFG 10	850-414	10000 x 2	10 x 0.002	-	1000 x 0.2	1 x 0.0002	35 x 0.01	2.2 x 0.0005
AFG 25	850-415	25000 x 5	25 x 0.005	-	2500 x 0.5	2.5 x 0.0005	90 x 0.02	5.5 x 0.001
AFG 50	850-416	50000 x 10	50 x 0.01	-	5000 x 1	5 x 0.001	180 x 0.05	11 x 0.002
AFG 100	850-417	-	100 x 0.02	-	10000 x 2	10 x 0.002	350 x 0.1	22 x 0.005
AFG 250	850-418	-	250 x 0.05	-	25000 x 5	25 x 0.005	900 x 0.2	55 x 0.01
AFG 500	850-419	-	500 x 0.1	-	50000 x 10	50 x 0.01	1800 x 0.5	110 x 0.02
AFG 1000	850-420	-	1000 x 0.2	1 x 0.0002	-	100 x 0.02	3500 x 1	220 x 0.05
AFG 2500	850-421	-	2500 x 0.5	2.5 x 0.0005	-	250 x 0.05	9000 x 2	550 x 0.1

• Accuracy  $\pm 0.1\%$  of full scale • Full scale deflection of loadcell typically 0.5 mm



Free software utility to export data to Excel® with the purchase of an additional cable

The dual level design of the keypad ensures that operation of this powerful gauge is kept simple, making it ideal for use from production shop floor to R&D.

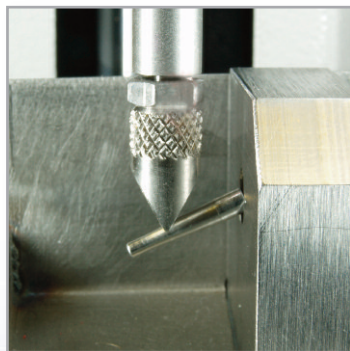
Housed in an ergonomically shaped, rugged aluminum case, the AFG is powered by either AC adaptor or standard rechargeable AAA batteries.

All models carry CE marking and are supplied in a robust carrying case with standard accessories and a calibration certificate traceable to Industry Standards.

versatile  
rugged  
accurate



Pull test on anchorage points



Compression test on medical device



AFG and accessories



Assembled in the USA

Mecmesin reserves the right to alter equipment specifications without prior notice

### North America

#### Mecmesin Corporation

45921 Maries Road, Suite 120,  
Sterling, Virginia 20166, U.S.A

e: info@mecmesincorp.com  
t: 703 433 9247 f: 703 444 9860

[www.mecmesincorp.com](http://www.mecmesincorp.com)

datasheet ref: 431-405-01-L01