

NOTICE

THIS DRAWING IS THE PROPERTY OF QUALITROL CORPORATION AND IS LOANED ONLY ON THE CONDITION THAT IT WILL BE USED TO FACILITATE THE PURPOSE FOR WHICH INTENDED AND NOT BE REPRODUCED, COPIED OR OTHERWISE DISPOSED OF, AND IS NOT TO BE USED IN WHOLE OR PART FOR FURNISHING INFORMATION RELATIVE TO THE MAKING OF DRAWINGS, PARTS APPARATUS OR PARTS THEREOF, EXCEPT BY WRITTEN ORDER FROM QUALITROL CORPORATION.

MODEL NO.

SWT-612

NOTE:

- 1.) UNIT PASSES HI-POT TEST;
2000 VOLTS BETWEEN CONNECTOR
TERMINALS AND GROUND FOR 60 SECONDS.

"L"(SEE CHART)
#16 GA, 4 COND.
TYPE 'SOW-A/SOW'
CABLE

SWITCH OPERATION:

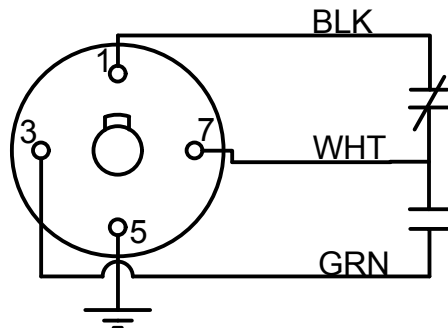
- WHEN ALARM SWITCH IS MOUNTED ON PRESSURE RELIEF DEVICE, BLACK AND WHITE ARE CLOSED.
- SHOULD THE MECHANICAL RELIEF DEVICE BE CALLED UPON TO OPERATE; WHITE OPENS ON BLACK AND CLOSES ON GREEN.
- BLACK AND WHITE WILL REMAIN OPENED UNTIL SWITCH RESET LEVER IS MANUALLY DEPRESSED.

SWITCH RATINGS FOR SWT-612-1 THRU 4

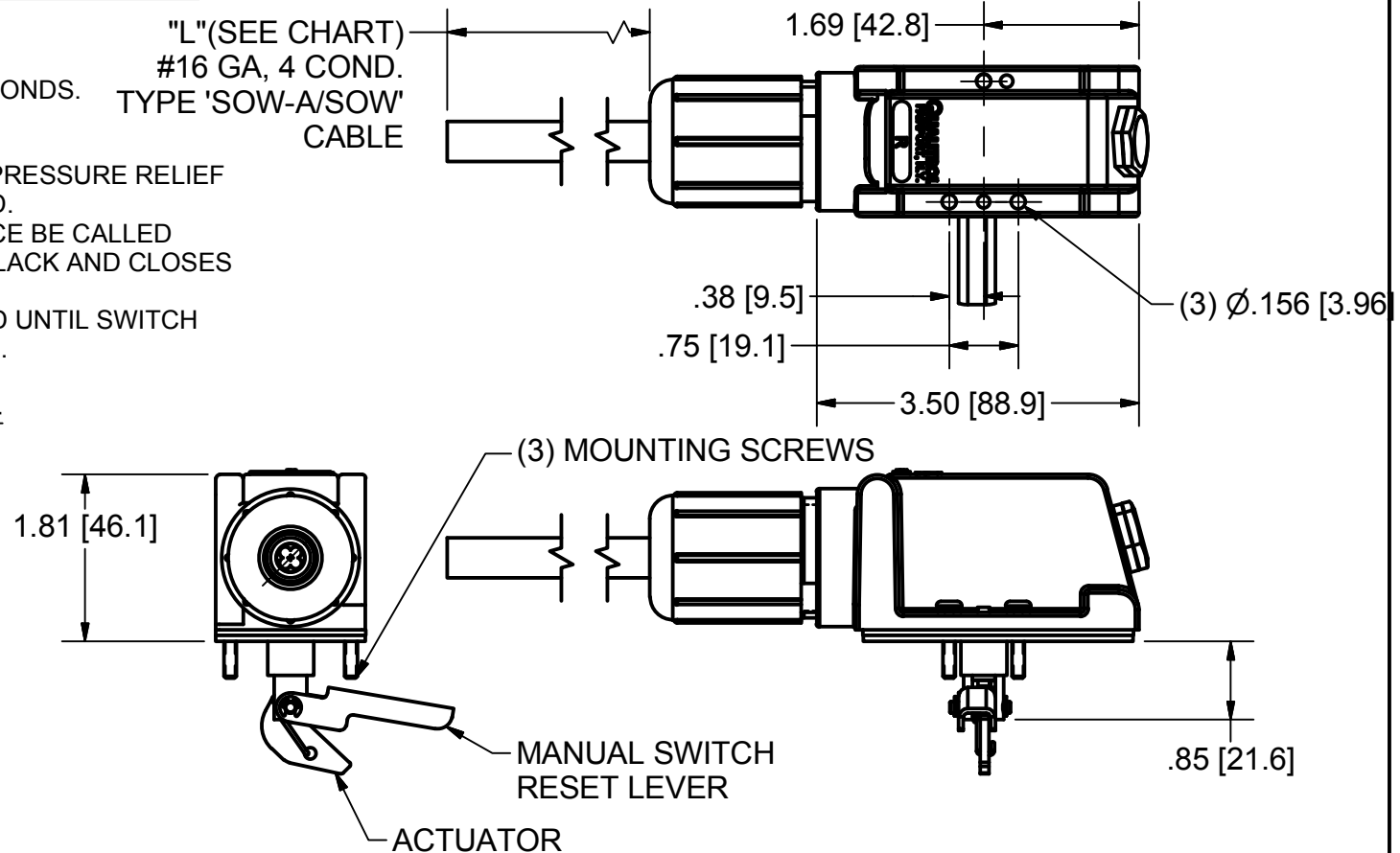
ENEC/CQC: 11(3) A, 125/250 VAC

UL/cUL: 11(3)A, 125/250 VAC

UL CARD FILE: E12252



DEV-WIR-4Q01
SHOWN IN NON-ALARM
STATE



34603	5-4-17	SWT-612-4	-	11A @ 125/250 VAC	CAPLUG ONLY
34603	5-4-17	SWT-612-3	80.00	11A @ 125/250 VAC	
34603	5-4-17	SWT-612-2	48.00	11A @ 125/250 VAC	
34603	5-4-17	SWT-612-1	0.00	11A @ 125/250 VAC	CONN. W/O CABLE
REVISION		PART NO.	"L"	SWITCH RATING	REMARKS

SHEET 1 OF 2 , SHEET 2 AND HIGHER FOR INTERNAL REF ONLY!

-			
-	5-4-17	VNT-014-3 WAS VNT-013-1	34603
-	7-3-13	PT.-4: ADDED IP65 VENT TO ALARM SWITCH	31508
LET	DATE	ALTERATION	C.N.

QUALITROL

DIMENSIONS AND TOLERANCES IN
ACCORDANCE WITH ASME Y14.5M-1994

PH. (585) 586-1515
FAX (585) 377-0220

1385 FAIRPORT ROAD
FAIRPORT, NY 14450

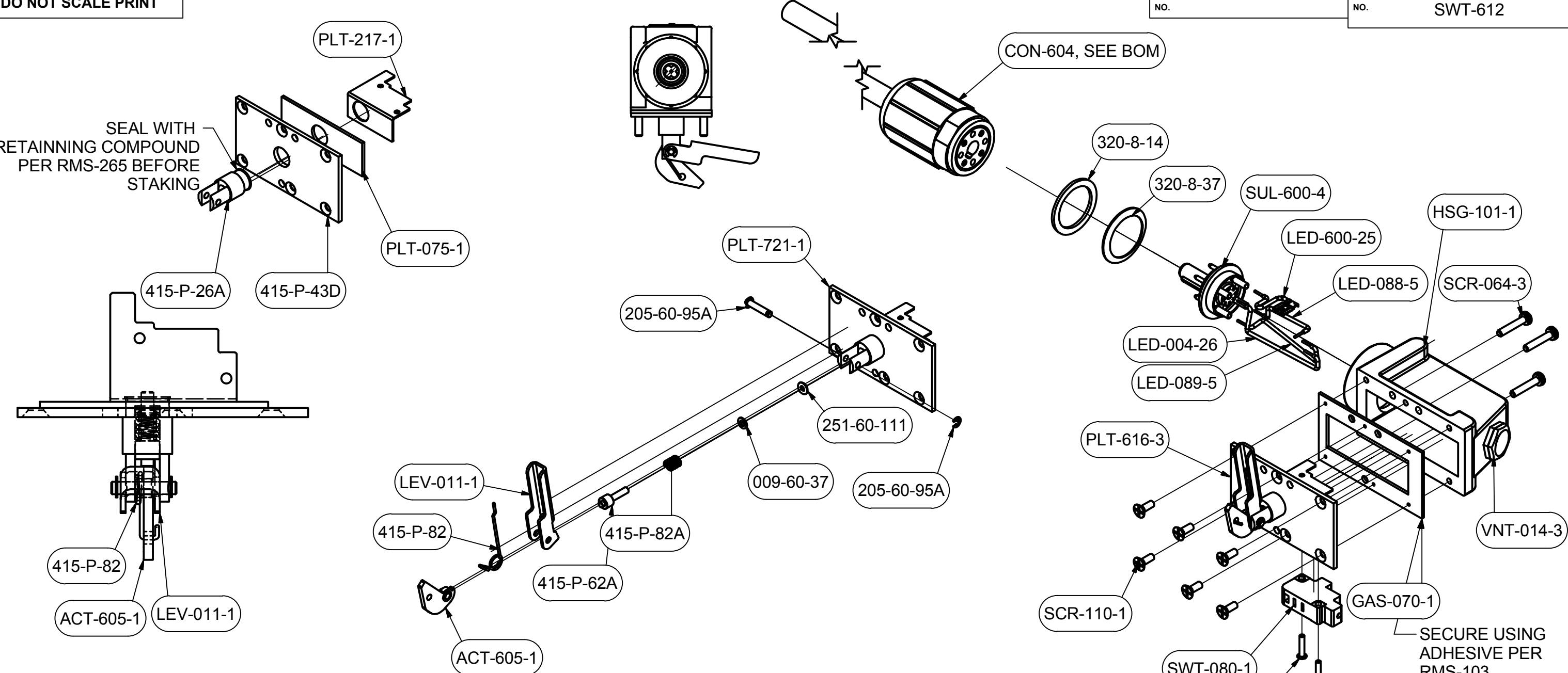
FORM 0-473 REV.D 10/22/02

TITLE:

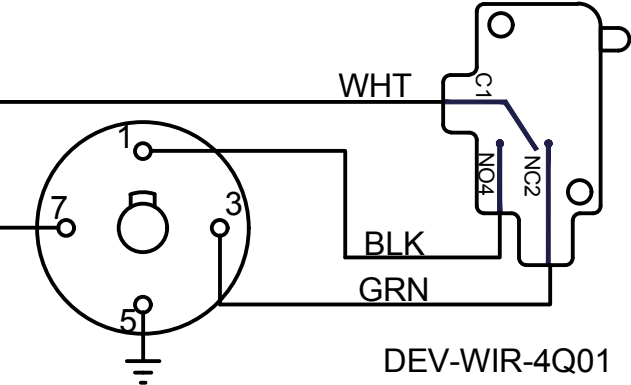
ALARM SWITCH

MODEL NO.

SWT-612



NOT FOR SWT-612-5



NOTICE
THIS DRAWING IS THE PROPERTY OF QUALITROL CORPORATION AND IS LOANED ONLY ON THE CONDITION THAT IT WILL BE USED TO FACILITATE THE PURPOSE FOR WHICH IT WAS INTENDED AND NOT BE REPRODUCED, COPIED OR OTHERWISE DISPOSED OF, AND IS NOT TO BE USED IN WHOLE OR PART FOR FURNISHING INFORMATION RELATIVE TO THE MAKING OF DRAWINGS, PARTS, APPARATUS OR PARTS THEREOF, EXCEPT BY WRITTEN ORDER FROM QUALITROL CORPORATION.

DIMENSIONS AND TOLERANCES IN ACCORDANCE WITH ASME Y14.5M-1994		TITLE: ALARM SWITCH	
QUALITROL® FAIRPORT, NEW YORK		SCALE 1:1	SHEET 2 OF 2 DRAWING NO. SWT-612