

## connection terminal plate, 3-pole (01243)



### Description

#### Article

Part No.: 01243

CRITO® 60Classic

connection terminal plate, 3-pole

35 - 120 mm<sup>2</sup>, AWG 2 - 250 MCM, lam. Cu. 9 - 15.5 x 2,4 - 10

for busbars 12, 15, 20, 25, 30 x 5, 10 and section busbars

#### System

60Classic

Product group 07

Subgroup 45

pack size 1

EAN 4021267012434

#### Advantages of the product

Terminals can be remove for connection of uncut conductors

catalog page 2019 : 3.5

eCl@ss 6.1 27141146  
eCl@ss 7.1 27141146  
ETIM 4.0 EC000001  
ETIM 5.0 EC000001

## Approvals

### Standards

IEC 61439-1:2011  
IEC 60999-1:1999  
IEC 60999-2:2003  
GB/T 7251.1

### Approvals

CSA , UL , DNV GL



for UL feeder circuits >250V

type number: 243-L

UL file: E123577, UL category (for USA): NMTR <http://www.ul.com>

UL file: E123577, UL category (for Canada): NMTR7 <http://www.ul.com>

CSA file: 110285, CSA class: 3211-37 <http://directories.csa-international.org>

CCC approval: no certification required

## Product data

### Details IEC

#### Standards

IEC 61439-1:2011  
IEC 60999-1:1999  
IEC 60999-2:2003  
GB/T 7251.1

### Electrical data IEC

Rated current (IEC): 250 A

rated voltage (IEC) AC: 690 V

The insulation performance of the article depends on the installation conditions.

### Supplementary data IEC

The following values have been verified with tests under certain conditions. Please ask Wöhner for this conditions before designing your panel.

max. permitted voltage (IEC) AC: 1000 V

max. permitted voltage (IEC) DC: 1500 V

current capacity (IEC) max.: 440 A

rated peak withstand current  $I_{pk}$  max.: 56.3 kA

### Details UL

#### Standards

UL 508

#### Electrical data UL

rated current (UL): 250 A

rated voltage (UL) AC: 600 V

for wires UL: Cu 75°C

SCCR unprotected max.: 10 kA

3 cycles (without OPD) @ 600 V AC

SCCR protected max.: 100 kA

fuse JDDZ Class J 500 A @ 600 V AC

SCCR: 100 kA / fuse Class J 500 A @ 600 V AC

100 kA / fuse Class J 600 A @ 480 V AC

35 kA / circuit breaker DIVQ 600 A @ 600 V AC

50 kA / circuit breaker DIVQ 600 A @ 480 V AC

65 kA / circuit breaker DIVQ 400 A @ 480 V AC

### Mechanical data

W x H x D: 81 x 200 x 84

weight: 53.5 kg/100

poles: 3-pole

for busbars: 12, 15, 20, 25, 30 x 5, 10 and section busbars

**Terminal points**

35 - 120 mm<sup>2</sup> / AWG 6 - MCM 250

flexible cables, directly or with wire-end ferrule,  
stranded round cables,  
lam. Cu 12x4 - 15.5x10

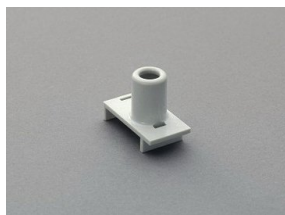
(flexible cables of maximum cross-section may not fit when using wire-end ferrule)

**Material properties**

Main body: temperature stability 125°C,  
self-extinguishing in acc. to UL 94,  
creepage resistance CTI 200,  
halogen-free

Cover: temperature stability 125°C,  
self-extinguishing in acc. to UL 94,  
creepage resistance CTI 200,  
halogen-free

## Accessories



### **01301**

single cover for terminals  
for terminal plate 01243